



1101 McKinley Street  
Anoka, MN 55303  
Phone (763) 786-6682  
Fax (763) 786-2167  
www.polycam.com



Part Name: HDPE pipe x PVC pipe Transition Fitting  
Part Number: 731-xxxx

### **HDPE Pipe x PVC Pipe Transition Fitting**

The transition fitting is constructed out of PVC material, epoxy-coated carbon steel, and high-density polyethylene (HDPE) 3408 pipe. The PVC and HDPE materials are joined together by hydraulically pressing the HDPE pipe onto the epoxy-coated carbon steel coupling with a compression ring supporting the connection. The PVC is pressed inside of the coupling providing a smooth flow for fluids between the HDPE and PVC. This transition fitting was purposefully redesigned for better flow capabilities.

### **Quality Assurance**

The transition fitting shall be manufactured by Poly-Cam, Inc. Poly-Cam, Inc. shall provide quality assurance with regards to proper installation, compatibility, performance, and acceptance.

### **System Performance**

The transition fitting is designed to handle the pressure rating of the HDPE pipe with a 2:1 safety factor at 73.40 degrees Fahrenheit with a minimum 50-year design life.

### **Materials**

**Carbon steel coupling:** The coupling is manufactured out of A53 grade carbon steel pipe.

The **epoxy coating** (3M™ Scotchkote™ Fusion-Bonded Epoxy Coating 6233) is fusion bonded to the metal. It has approvals AWWA C213 and C550.

**PVC SCH 35:** PVC Gasket Sewer Pipe conforms to ASTM D-3034 in sizes 4" through 15" .

**High Density Polyethylene:** The transition fitting is constructed with a 3408 HDPE pipe (cell class 345454c) classified according to ASTM D3350.

## **Installation**

### **HDPE pipe end**

Install transition fitting to comply with the pipe manufacturer's recommended procedures. All field welds shall be accomplished per Plastic Pipe Institute's welding procedure for butt fusion or electrofusion.

### **PVC coupling**

Install the PVC coupling to comply with the pipe manufacturer's recommended procedures for solvent cement.

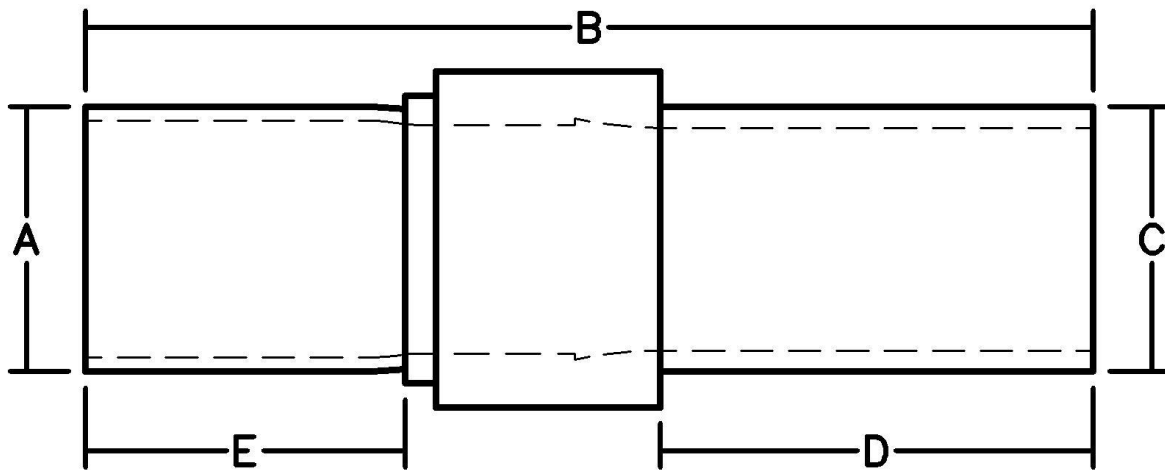
- A medium-bodied, medium set multi-purpose cement designed for use on PVC, CPVC and ABS pipe and fittings.
- Schedule 40 & 80, Types I & II, up to 6 inches.
- For potable water, pressure pipe, gas, and conduit drain waste and vent pipe.
- Flows freely and provides a thick layer of cement on the pipe and loose-fitting joints.
- Apply at temperatures 40°F to 100°F.
- Meets ASTM D-2564

## **Warranty**

The warranty period is one year after the date of substantial completion of installation.

# Series 731 Transition for PVC/HDPE Sch. 35

Nominal Size (In.)	PVC Diameter <b>A</b>	Overall Length <b>B</b>	HDPE Diameter <b>C</b>	HDPE Fusing Length <b>D</b>	PVC Length <b>E</b>
4	4.215	33.35	4.5	18	8.5
6	6.275	39.85	6.625	22	9
8	8.4	41.5	8.625	22	10.5
10	10.5	51	10.75	27	10
12	12.5	50	12.75	28	9
15	15.3	59	16	31	12



Fully pressure rated • Standard SDR sizes 7,9,11,17  
 Manufactured to D1599, D1598, F-714, D3034